

MediaWall[®]

Video Wall Display Processor



4K Ready When You Are



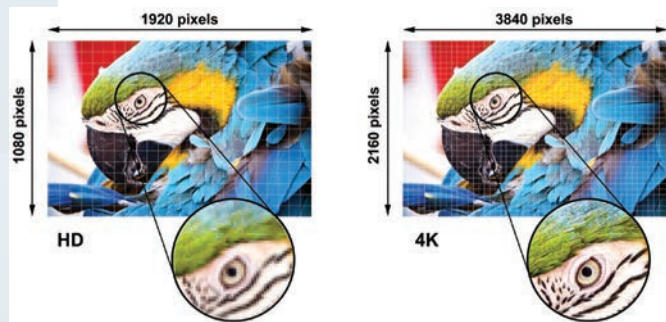
Display Video, Run Apps, And Decode IP At 4K Resolution

The new MediaWall® V is the world's first true 4K/UHD video wall processor, offering up to 4K resolution I/O, single wire connectivity and fully scalable windows.

The MediaWall V display processor features an architecture that combines the real-time processing and reliability of a hardware-based processor with the flexibility of a separate processor to run applications. Add in video over IP decoding, enhanced security and an intuitive, easy-to-operate control interface. The result is a 4K wall processing system with unsurpassed power, security, and versatility.

A true video wall is more than a wall of monitors. Rather, it is a continuous multi-screen surface upon which to display graphics and video imagery, seamlessly and with synchronization in fully scalable windows that can be positioned anywhere on the wall, including across monitor bezels.

With a MediaWall V processor, you can display ultra high-resolution 4K video and graphics together with HD sources on a wall array of 2K/HD or 4K/UHD display devices. A 4K/UHD video wall offers dramatically higher pixel density, up to 4x more total resolution than a conventional HD video wall of similar size. The MediaWall V processor's 4K capabilities enable the display of data and visuals in greater detail than ever before – improving situational awareness, assessment and response.



High Performance Video Processing

The MediaWall V processor can display any configuration of window layouts across a multi-screen array. Windows can be sized as required anywhere, within or across screen boundaries, in any aspect ratio and zoomed in to emphasize details. Signal switching and preset layout recall are fast and seamless.

A purpose-built architecture dedicates processing resources for each input. Each is displayed in real-time at full color, frame and pixel rates, without common video wall artifacts such as dropped frames or image tearing. The result is superb performance and an enhanced visual experience.

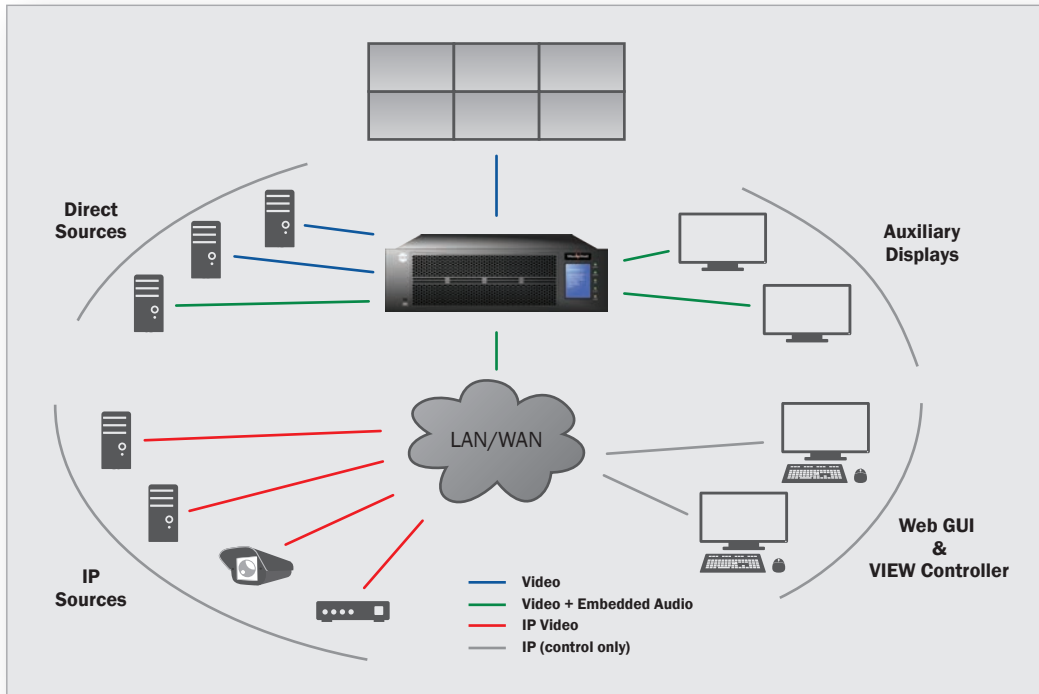
The MediaWall V's application processor supports the decoding of multiple IP camera and other H.264 streams and the running of Windows® applications. A hybrid architecture, with two separate processing subsystems, isolates video wall processing functions from application processing, allowing the wall display to operate continuously even in the event that the second processor is compromised by problems like malware or software failure.

HDCP capability allows protected content, such as the output of a Blu-ray player, to be displayed on the video wall.



MediaWall Topology

The MediaWall V processor accepts direct video feeds from computers, cameras and other sources via HDMI single-wire interfaces or as IP streams over Ethernet, at up to 4K resolution. It outputs processed video to the video wall, also over HDMI single-wire interfaces, at up to 4K resolution. Auxiliary video output ports support switched video to additional displays and audio processors. Control is via Ethernet.



Control Options

The MediaWall V processor offers a range of control options. The web-based set-up GUI supports both local and remote access, "drag and drop" window positioning and scaling, wall layout presets, and input selection. In addition, the newly introduced VIEW™ Controller adds a graphically-enhanced user interface with live thumbnails, providing operators with a very intuitive user interface. The processor can also be controlled by a variety of third-party devices.

For the most demanding applications, the MediaWall V processor is compatible with RGB Spectrum's MultiPoint® Control Room Management System (Enterprise MCMS™) — an innovative hardware and software platform that provides operators with arbitrated keyboard and mouse (KVM) control over system resources.

Enterprise MCMS is ideal for use in mission-critical control room applications such as command centers, debriefing centers, security operations centers (SOCs), emergency operations centers (EOCs), industrial/process control and SCADA system monitoring. The system's unique design isolates critical systems from the network, effectively protecting sensitive data from external tampering, malware and viruses.



VIEW™ Controller
Operation and control
with live thumbnails



Powerful Capabilities In the Control Room And Beyond

The MediaWall V processor has the ability to power a video wall plus auxiliary monitors or even multiple video walls, making it suitable for the most sophisticated audio-visual environments.

When used with projectors, the processor provides adjustable overlaps for edge-blending to enable immersive, seamless UHD displays that span entire rooms - ideal for museums, theatres, auditoriums and a range of other venues.

There has never been so capable a video wall processor. With 4K/UHD resolutions fully supported, the MediaWall V processor is ideal for graphically rich applications like simulation & training, modeling, and high-resolution video surveillance.

Additional Features

- Mullion / bezel compensation
- Up to 60 wall layout presets
- HDCP copy protection compliant
- Up to 6 displayed clocks
- Foreground graphics
- Image overlap for edge blending
- Auxiliary switched outputs
- Borders and labels

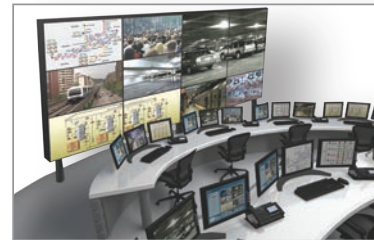
Options

- Application processor for IP stream decodes and Windows® applications
- Up to 3 wall arrays
- Redundant hot swappable power supply
- VIEW™ Controller



COLLABORATE *with your team*

- Connect multiple users
- Display visuals and data
- Control with a computer



VISUALIZE *your data*

- Decode IP streams
- Run applications directly on the video wall
- Display visuals, any size, anywhere



CONTROL *your world*

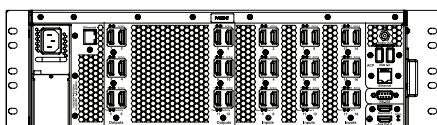
- Utilize encrypted IP video + KVM control
- Arbitrate use of system resources
- Work with remote operations



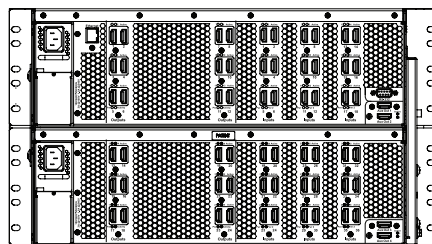
Specifications

| | Model 500 | Model 550 |
|--|---|--|
| Inputs | | |
| Number (max) | 18 | 36 |
| Resolution | 640x480 @ 85Hz to UHD 3840x2160 @ 30Hz & 4096x2160 @ 24Hz | 640x480 @ 85Hz to UHD 3840x2160 @ 30Hz & 4096x2160 @ 24Hz |
| Connector Type | HDMI 1.4b | HDMI 1.4b |
| Clock Rate | Up to 330MHz | Up to 330MHz |
| Color Depth | 24-bit | 24-bit |
| Outputs | | |
| Number (max) | 12 @ HD/2K, plus 2 auxiliary outputs or 6 @ 4K, plus 2 auxiliary outputs | 24 @ HD/2K, plus 4 auxiliary outputs or 12 @ 4K, plus 4 auxiliary outputs |
| Resolution | Up to 3840x2160 (4K, Ultra HD, UHD) @ 30Hz & 4096x2160 @ 24Hz | Up to 3840x2160 (4K, Ultra HD, UHD) @ 30Hz & 4096x2160 @ 24Hz |
| Connector Type | HDMI 1.4b | HDMI 1.4b |
| Display Windows | | |
| Number (max) | 32 | 64 |
| Labels | | |
| Characters per label | Up to 64 | Up to 64 |
| Font Styles | 50 | 50 |
| International Fonts | Yes | Yes |
| Border Color Depth | 24-bit | 24-bit |
| Physical | | |
| Cable Management | Strain relief bar | Strain relief bar |
| Size (h x w x d) | 5.25 x 19.0 x 23.0 inches (3RU) 133 x 483 x 584 mm | 10.5 x 19.0 x 23.0 inches (6RU) 267 x 483 x 584 mm |
| Weight | 40 lbs / 18 kg | 82 lbs / 37 kg |
| Power Supply | Hot plug 850W, 100 - 240 VAC auto ranging 50/60 Hz | Hot plug 850W, 100 - 240 VAC auto ranging 50/60 Hz |
| Environmental | | |
| Operating Temperature | +41 to +104 °F (5 to +40 °C) | +41 to +104 °F (5 to +40 °C) |
| Storage Temperature | -4 to +158 °F (-20 to +70 °C) | -4 to +158 °F (-20 to +70 °C) |
| Operating Humidity | 5% to 90% non-condensing | 5% to 90% non-condensing |
| Altitude | Up to 13,123 ft (4000 m) at 104°F (40°C) | Up to 13,123 ft (4000 m) at 104°F (40°C) |
| Control | | |
| Ethernet 10/100/1000 Base-T, RS-232 Command line and graphical user interface | | |
| Audio | | |
| Auxiliary (AUX) HDMI 1.4b outputs (embedded) & Application Processor (AP) option (analog, 3.5mm mini-jack) | | |

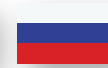
Specifications subject to change.



Model 500



Model 550



Worldwide Offices

Corporate Headquarters

950 Marina Village Parkway
Alameda, California 94501
TEL: (510) 814-7000
FAX: (510) 814-7026
WEB: www.rgb.com
EMAIL: sales@rgb.com

European Headquarters

4 Rivermead Business Park
Pipers Way
Thatcham
Berkshire RG19 4EP UK
TEL: +44 (0) 1635 887 399
MOBILE: +44 (0) 7712 816328
EMAIL: peter.airs@powerit2.com

Asian Headquarters

Floor 17-1557, Block B
Utown International Office Building #7
Sanfengbei Lane
Chaowai Street, Chaoyang District
Beijing, China
TEL: +86 10 5780 3068
EMAIL: asiasales@rgb.com

USA Offices

Baltimore, Maryland
Atlanta, Georgia
Cincinnati, Ohio
Dallas, Texas
Long Island, New York
Seattle, Washington
Los Angeles, California

Middle Eastern Headquarters

Yes Business Center, Suite 302
14B Street, Al Mafrq Road
Al Barsha 1, Dubai
United Arab Emirates
TEL: +971 4 513 4783
MOBILE: +971 50 551 2741
EMAIL: middleeaestsales@rgb.com
africasales@rgb.com

International Offices

Shanghai, China
St. Petersburg, Russia
Medellin, Columbia
London, UK
Dubai, UAE



SPECTRUM
VISUAL RESOURCE MANAGEMENT™

950 Marina Village Parkway Alameda, California 94501 (510) 814-7000 sales@rgb.com www.rgb.com